



CLOUDMARK GATEWAY™ for Hosted Messaging Providers

KEY FEATURES AND BENEFITS

Directory Integration for Policies

Cloudmark Gateway is able to implement policies based on directory entries, allowing hosted messaging providers to deliver flexible policies at the domain level. This allows hosted providers to offer value-added services customized to the needs of individual businesses.

Policy Management Engine

Cloudmark Gateway's policy management engine ties into LDAP or other repositories for supporting custom rules, whitelists/blacklists, sender authentication, and other policies.

Intelligent Flow Control

Cloudmark Gateway utilizes intelligent rate limiting, RBLs, tarpitting, traffic shaping and other flow control techniques against malicious senders to minimize impact on messaging infrastructure.

Full Content Filtering at the Edge

Cloudmark Gateway can run Cloudmark Authority's comprehensive anti-spam, anti-phishing and anti-virus solution at the protocol or at the content filtering stage. Authority's industry-leading filtering significantly lowers operational and infrastructure costs and improves customer satisfaction.

Centralized Administration and Management

Web-based and powerful command line interface management and reporting. Global cluster configuration and policy management saves valuable administrators time. System administrators receive consolidated views across the cluster and are able to monitor server states and activities via an easy-to-use interface, enabling early detection of delivery problems or abuse.

Comprehensive Messaging Security and Policy Management

The unprecedented surge in messaging abuse calls for a new paradigm for protecting the hosted messaging environment. Cloudmark Gateway performs intelligent protocol and content filtering at the perimeter of any hosted messaging environment including Microsoft Exchange, IBM Lotus Domino, Novell GroupWise and Linux-based email. Tightly integrated with Cloudmark Authority™, it blocks 98% of unwanted email traffic before it impacts internal storage and mail servers. As a result, hosted messaging providers benefit from dramatically reduced infrastructure costs while delivering a higher quality of service to business customers.

Cloudmark Gateway's flexible policy management engine allows hosted messaging providers to offer individualized email services to fit the requirements of any business. A wide variety of message handling policies can be applied at the workgroup or company level to help customers save time and money. For example, administrators can automatically restrict "company confidential" messages from being delivered outside a specific domain, thereby ensuring strict compliance to company policies.

Critical to any managed environment is system availability and reliability. Cloudmark Gateway operates in a clustered configuration, with shared intelligence, policy control and dynamic failover across the cluster. In addition, Cloudmark Authority maintains its own cache of threat fingerprints, enabling full redundancy and independence. If connectivity to the updates server is lost, filtering continues with the last updates received, which are stored in memory and regularly backed up to disk.

Cloudmark Gateway offers hosted messaging providers these unique advantages:

INBOUND AND OUTBOUND POLICY MANAGEMENT

Cloudmark Gateway is designed to support any business policy by hooking into directories, databases and other data sources (e.g., provisioning systems). A fully extensible framework enables easy integration with third party applications and legacy systems. Cloudmark Gateway allows hosted messaging providers to deliver a truly differentiated service. Using Cloudmark Gateway's policy management engine, providers can apply complex policies at the user or group level to meet the unique business needs of SMB and enterprise customers.

CARRIER CLASS PERFORMANCE

Each Cloudmark Gateway server is able to process over 3 million messages per hour with Cloudmark Authority content filtering – 20 times faster than competitive solutions. Even with this high level of performance, Cloudmark Gateway utilizes only a fraction of the CPU of traditional filtering techniques. The ability of Cloudmark Gateway to run full content filtering at the edge means that the majority of bad messages are stopped before they impact messaging infrastructure. As a result, Cloudmark Gateway significantly lowers server and storage requirements previously needed to handle incoming message streams.

INDUSTRY-HIGHEST ACCURACY

Email security is at the forefront of the mind of many organizations as growing messaging abuse threatens corporate network security and lowers worker productivity. Cloudmark Gateway works seamlessly with Cloudmark Authority – the industry's fastest and most accurate messaging security solution. Cloudmark Authority filters spam, phishing and viruses with greater than 98% accuracy and near zero false positives. It uses Advanced Message Fingerprinting™ algorithms together with corroborated reporting from the Cloudmark Global Threat Network to automatically detect messaging threats and their variants. Cloudmark Authority can be run at either the SMTP stage or at the content stage after a message has been accepted.

UNPARALLELED SCALABILITY AND RELIABILITY

Cloudmark Gateway's architecture is designed to ensure high availability and service quality at all times. Each server dynamically scales to support up to 100,000 concurrent connections. Cloudmark Gateway operates in a clustered environment for redundancy and failover protection.

KEY FEATURES AND BENEFITS (CONT.)

Reporting and Analytics

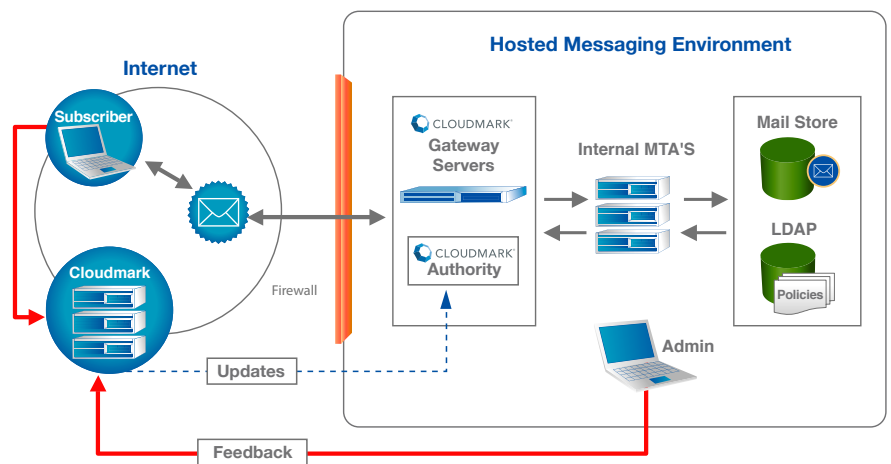
Cloudmark Gateway software supports SNMP reporting, allowing easy integration with existing monitoring systems. It also provides live traffic analytics via a Web interface, including comprehensive tabular and graphical reports that can be exported into various formats.

Extensible Platform

The Cloudmark Gateway platform enables high flexibility and programmability. Product functionality can be easily extended through API support for integrating business applications, such as third party or custom-developed billing, network provisioning or support systems.

CLOUDMARK IN THE HOSTED MESSAGING ENVIRONMENT

As an edge solution, Cloudmark Gateway together with Cloudmark Authority delivers comprehensive threat protection and enhanced message handling capabilities while fully leveraging the existing messaging architecture.



OS REQUIREMENTS

Supported Operating Platforms

- Red Hat Enterprise Linux 4
- Sun Solaris 10

Injection Protocols

- SMTP/ESMTP

Delivery Protocols

- SMTP (RFC 2821 compliant)
- LMTP (RFC 2033 compliant)

Performance

- SMTP Reception: 3+ million messages per hour with full content filtering
- SMTP Delivery: 3+million messages per hour with full content filtering
- Concurrent SMTP Sessions: 100,000+ with full content filtering



For more information visit us at www.cloudmark.com

Headquarters
128 King Street, 2nd Floor
San Francisco, CA 94107 USA
Ph: +1.415.543.1220
Fax: +1.415.543.1233

Cloudmark Europe, Ltd.
Building 3, 566 Chiswick High Road
London W4 5YA England
Ph: +44 (0) 208 849 8363
Fax: +44 (0) 208 899 6001

Cloudmark Japan
Kato Building 6F
2-11-3 Iwamoto-cho
Chiyoda-ku
Tokyo 101-0032 Japan
Tel: +81 (3)5532 7636
Fax: +81 (3)5532 7373